



# TRG<sub>pro</sub>™

## AutoCF 1.1 for the TRG<sub>pro</sub>

**P/N 1009-00044**

Revision 1  
Revision Date: 11/11/00

Copyright © 1999-2000 TRG Products, Inc. All rights reserved. This documentation may be printed and copied solely for use in developing products for the TRGpro™. No part of this documentation may be reproduced or transmitted in any form or by any means or used to make any derivative work (such as translation, transformation, or adaptation) without express written consent from TRG Products.

TRGpro is a trademark of TRG Products, Inc.

3Com, the 3Com logo, HotSync, and Palm Computing are registered trademarks, and Palm OS, and the Palm Computing Platform logo are trademarks of 3Com Corporation or its subsidiaries.

Portions of the software are licensed from SanDisk Corporation. © SanDisk Corporation, 1999.

Microsoft and Windows are registered trademarks of Microsoft Corporation. Other brand and product names may be registered trademarks or trademarks of their respective holders.

TRG Products, Inc. reserves the right to revise this documentation and to make changes in content from time to time without obligation on the part of TRG Products to provide notification of such revision or changes.

TRG PRODUCTS MAKES NO REPRESENTATIONS OR WARRANTIES THAT THE DOCUMENTATION IS FREE OF ERRORS OR THAT THE DOCUMENTATION IS SUITABLE FOR YOUR USE. THE DOCUMENTATION IS PROVIDED ON AN 'AS IS' BASIS. TRG PRODUCTS MAKES NO WARRANTIES, TERMS OR CONDITIONS, EXPRESS OR IMPLIED, EITHER IN FACT OR BY OPERATION OF LAW, STATUTORY OR OTHERWISE, INCLUDING WARRANTIES, TERMS, OR CONDITIONS OF MERCHANTABILITY, FITNESS FOR A PARTICULAR PURPOSE, AND SATISFACTORY QUALITY.

TO THE FULL EXTENT ALLOWED BY LAW, TRG PRODUCTS ALSO EXCLUDES FOR ITSELF AND ITS SUPPLIERS ANY LIABILITY, WHETHER BASED IN CONTRACT OR TORT (INCLUDING NEGLIGENCE), FOR DIRECT, INCIDENTAL, CONSEQUENTIAL, INDIRECT, SPECIAL, OR PUNITIVE DAMAGES OF ANY KIND, OR FOR LOSS OF REVENUE OR PROFITS, LOSS OF BUSINESS, LOSS OF INFORMATION OR DATA, OR OTHER FINANCIAL LOSS ARISING OUT OF OR IN CONNECTION WITH THIS DOCUMENTATION, EVEN IF TRG PRODUCTS HAS BEEN ADVISED OF THE POSSIBILITY OF SUCH DAMAGES.

IF THIS DOCUMENTATION IS PROVIDED ON A COMPACT DISC, THE OTHER SOFTWARE AND DOCUMENTATION ON THE COMPACT DISC ARE SUBJECT TO THE LICENSE AGREEMENT ACCOMPANYING THE COMPACT DISC.

## **CONTACT INFORMATION**

### **TRG Products, Inc.**

2851 104<sup>th</sup> St., Suite H  
Des Moines, IA 50322  
U.S.A.  
515-252-7525  
[www.trgpro.com](http://www.trgpro.com)

### **Palm Computing World Wide Web**

[www.palm.com](http://www.palm.com)

### **Metrowerks World Wide Web**

[www.metrowerks.com](http://www.metrowerks.com)

# Contents

|  |            |
|--|------------|
| <b>Contents .....</b>                        | <b>iii</b> |
| <b>About AutoCF .....</b>                    | <b>4</b>   |
| Requirements .....                           | 4          |
| Upgrading .....                              | 4          |
| Installation .....                           | 4          |
| Uninstall .....                              | 5          |
| <b>Enabling AutoCF .....</b>                 | <b>6</b>   |
| AutoCF Preferences Panel .....               | 6          |
| Changing the Path used by AutoCF .....       | 7          |
| <b>Populating the AutoCF Directory .....</b> | <b>8</b>   |
| Launcher Options .....                       | 10         |
| <b>Limitations .....</b>                     | <b>12</b>  |
| Notes .....                                  | 12         |
| Fixes/Additions .....                        | 12         |
| Additional Documentation .....               | 13         |
| Palm Computing Documentation .....           | 13         |
| CompactFlash Documentation .....             | 13         |

# About AutoCF

AutoCF allows programs and databases stored on a CompactFlash memory card to be seamlessly accessed by the Palm OS.

---

## Requirements

AutoCF requires the following:

1. TRGpro.
2. CompactFlash (CF) memory card.
3. Palm OS 3.5.1 or higher.

## Upgrading

To upgrade to AutoCF:

1. Perform the steps listed in **Uninstall** on page 5.
2. Reinstall as listed in **Installation** on page 4.

**Note:** You cannot overwrite an existing installation of AutoCF with a new version.

## Installation

To install AutoCF:

1. Create a **subdirectory** on a CF memory card. Such as \AutoCF\.
2. **Move** the desired **Palm programs** and **databases** into the newly created subdirectory on the CF card.
3. Move the files **AutoCF Panel.prc** and **AutoCF Extension.prc** onto the TRGpro using HotSync, CFPro, or beaming.
4. Perform a **soft reset** when prompted.

## ***Uninstall***

To uninstall AutoCF:

1. Press **Reset** while holding down the **PageUp** button. This prevents the extension from running at boot time.
2. **Delete** the applications **AutoCF** and **AutoCF Extension** using the built-in application Launcher. Do not use CFPro or other third party utility. Refer to Figure 1.



**Figure 1. Delete**

# Enabling AutoCF

To enable AutoCF:

1. Tap on the **Prefs** icon and select **AutoCF**. Refer to Figure 2.

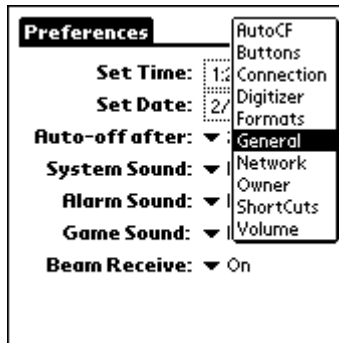


Figure 2. General Preferences

2. Make sure **Path** option points to a valid directory on the CF card. Refer to Changing the Path used by AutoCF on page 7.
3. Click the **Enable** button. Refer to Figure 3.

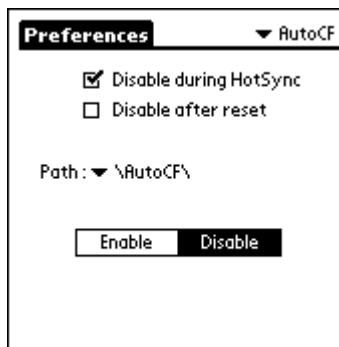


Figure 3. Preferences Enable

---

## AutoCF Preferences Panel

The following fields are available in the AutoCF Preferences panel. Refer to Figure 3

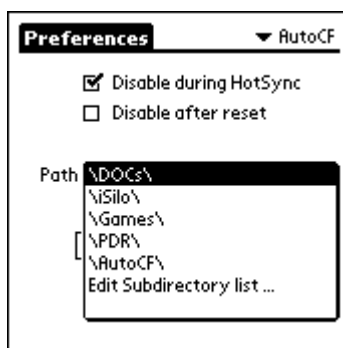
- ◆ **Disable during HotSync** – This option temporarily disables the extension during HotSyncs. If this option is not selected, programs and databases in the extension subdirectory may be backed up during a HotSync.
- ◆ **Disable after reset** – The option disables the extension after a reset.
- ◆ **Path** – Subdirectory used on CF memory card. Make sure the extension is disabled when changing this option.

## Changing the Path used by AutoCF

AutoCF version 1.1 adds the ability to maintain a list of directories used by AutoCF. AutoCF only supports use of one directory at a time, but this feature allows you to quickly change between different directories on your CF memory cards. Modifying the directory list for AutoCF is similar to the method used to add categories to the Launcher.

To change the active directory used by AutoCF:

1. Tap on the **Path** drop-down list. Refer to Figure 3.
2. Select the desired **Path**. Refer to Figure 4.



**Figure 4. Preferences Path**

3. To add a directory to the list, select **Edit Subdirectory list**. Refer to Figure 5.



**Figure 5. Edit Subdirectories**

**Note:** AutoCF Preferences Panel supports up to 16 subdirectories.

# Populating the AutoCF Directory

To populate the AutoCF directory:

- 1. Open **CFPro** and tap **CF** to view the CF card. Refer to Figure 6.



Figure 6. Open CFPro Directory

- 2. Double-tap the **AutoCF** directory to view the contents of the directory. Two directories display at the top. Refer to Figure 7.



Figure 7. AutoCF Directory

- 3. Tap **RAM** to view the files in RAM.



4. **Select a simple program** to move into AutoCF (such as Graffiti) and the select the drop-down menu Tools > **Move to CF**. Refer to Figure 8.

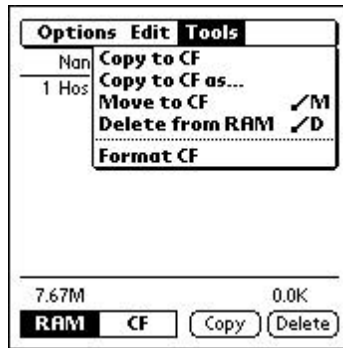


Figure 8. Tools

5. Tap **CF** to view the CF card contents again. The file you moved to the AutoCF directory displays.

---

## Launcher Options

The Launcher adds the item **AutoCF...** under the Options menu when the Launcher determines that AutoCF is loaded and enabled. Refer to Figure 9.

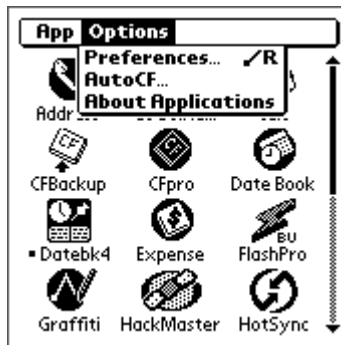


Figure 9. Options

Select AutoCF to display the AutoCF Preferences panel. Refer to Figure 10.

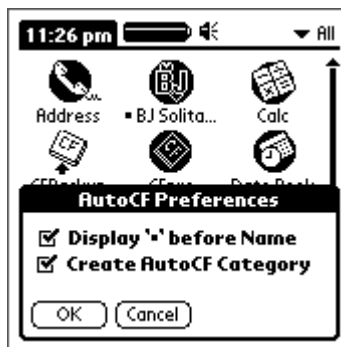


Figure 10. AutoCF Preferences

**Display '\*' by Name** – This option toggles a small symbol next the applications that are on CF. Refer to Figure 11 and Figure 12.



Figure 11. Display '\*' by Name

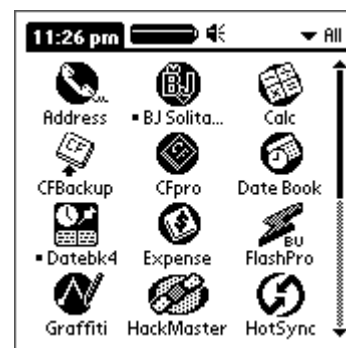
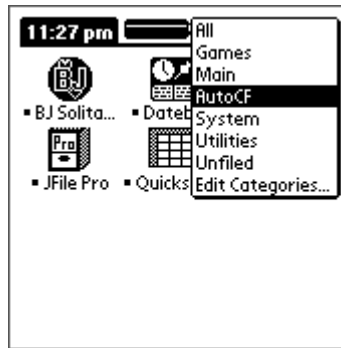


Figure 12. Display '\*' by Name

**Create AutoCF Category** – This option creates the category AutoCF. Applications on the CF card will be placed into this Category. Refer to Figure 13.



**Figure 13. Create AutoCF Category**

# Limitations

The following limitations apply to AutoCF:

- ◆ Only Palm programs and read-only databases may be placed into the CF subdirectory.
- ◆ The extension does not verify that only valid Palm programs and databases are present in the extension subdirectory. It is up to you to make sure that only valid files are placed into the extension subdirectory.
- ◆ Do not remove the CF card when a program or database on the CF card is opened. In most cases, this will not be a problem.
- ◆ Do not remove power to the unit when a program or database on the CF card is opened.
- ◆ AutoCF only supports 256 files.
- ◆ Applications residing on the CF card cannot be beamed using AutoCF.

---

## Notes

The following notes apply to AutoCF:

- ◆ If the CF card is removed while the AutoCF is enabled, the extension simulates a press on the applications button. If an application is running, this usually causes the application to close and return to the Launcher.
- ◆ Both AutoCF and AutoCF Extension can be moved to flash using FlashPro.

## Fixes/Additions

The following lists fixes and additions to AutoCF:

| Version | Fix or Addition                      |
|---------|--------------------------------------|
| 1.0     | Initial release                      |
| 1.1     | Added multiple directory support     |
| 1.1     | Added API for third party developers |
| 1.1     | Minor bug fixes                      |

---

## Additional Documentation

### Palm Computing Documentation

For developers new to the Palm Computing® platform, the best introductory information can be found in the Development Zone section of [www.palm.com](http://www.palm.com). It includes guides to application programming for the Palm OS. Resource works include:

- ◆ Palm OS SDK Reference
- ◆ Palm OS Programmer's Companion
- ◆ Palm OS 3.0 Tutorial
- ◆ Debugging Palm OS Applications

### CompactFlash Documentation

In addition to the information contained in this document, TRGpro developers are encouraged to access the CompactFlash Association (CFA) web site for additional information about developing CompactFlash devices. The CFA web site can be found at <http://www.compactflash.org>. From this site, developers can:

- ◆ Read general information the CompactFlash Association (CFA)
- ◆ Download the latest CompactFlash and CF+ specifications
- ◆ Read FAQs about CompactFlash
- ◆ Identify companies that are developing CompactFlash products
- ◆ Search for CompactFlash products by category
- ◆ Read CFA press releases and view the CFA event calendar
- ◆ Find information about contacting or joining the CFA

